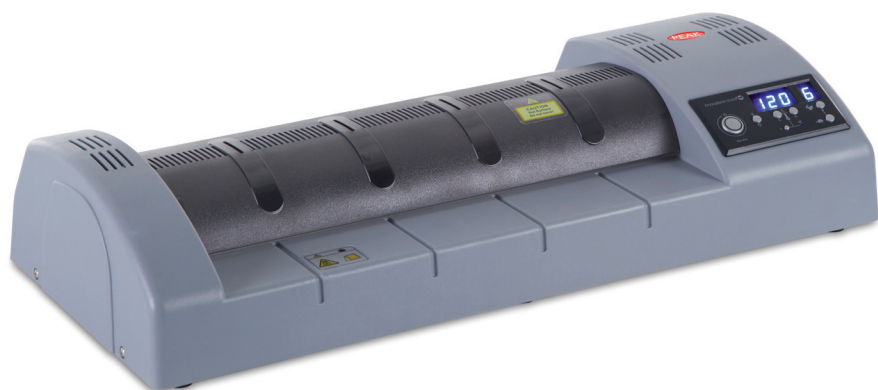


Product instruction manual
A2 Pouch Laminating System
Peak High Speed - PHS-450



Peak laminators have been designed to be user friendly, however we strongly recommend you take a few minutes to read through this manual to ensure correct operation.

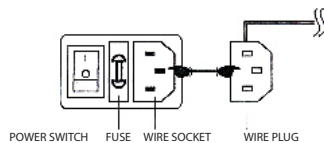
Keep this manual safe for future reference.



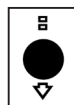
Thank you for purchasing the Peak High Speed PHS-450. Peak laminators are designed to give you professional, high quality results, quickly and easily. Please take a few minutes to read through this important document as any **damage caused to your laminator by user error is not covered under warranty.**

How to use your laminator

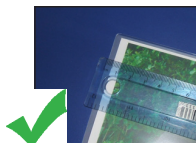
- 1) Ensure the laminator is positioned on a solid, flat surface with adequate space at both the front and rear.
- 2) Connect the system to the power supply and turn on the power switch. The display will illuminate to indicate the system is on.
- 3) Set the temperature to the required temperature on the display using the 'Temperature Set' buttons (see chart, this is a guide only).
- 4) As the laminator warms up to the desired temperature the READY light will flash.
- 5) Once the laminator reaches the required temperature, the READY light will then illuminate.
- 6) Insert the document to be laminated into a correct size pouch, ensuring that it is centrally positioned and that an even border (approx. 5 mm) is left around the edge. If you want to laminate a document that does not fit the size of the pouch being used, or small cut-up pieces then you will need to use a Lifejacket®.
- 7) Insert the prepared item into the laminator. Ensure the pouch is always inserted SEALED EDGE FIRST.
- 8) The document will pass through the laminator automatically and appear out of the back. (Do not pull on the document when you see it appear out of the laminator, wait until it becomes free).



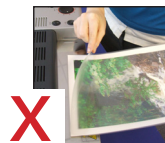
It is important that you watch your document as you laminate in case of jamming. If your laminating appears to be jamming, press the REVERSE button and gently ease the document back out.



Don't overlap



Leave a 5mm border



Don't laminate open end first

Parts and Features

Diagram 1



Special Functions

Sleep mode (SLP) - When the laminator is left switched on and does not laminate a document for a period greater than 30 minutes, the laminator will automatically go into 'sleep mode' and the heating supply will cut off. The letters SLP will be displayed on the LED display.

To reactivate the laminator, press any button.



Never laminate small, cut-up pieces without using a Lifejacket® or you risk jamming and damaging your laminator (this will not be covered under warranty).



What is a 'Lifejacket'®?

The Lifejacket® is a highly durable patented product made from Teflon® that should be used when laminating cut-up, odd shaped pieces (such as shapes, letters, signs as shown above) to prevent damage to your laminator and potential jamming.

Why use a Lifejacket®?

- Protect your laminator from jamming
- Extend the life of your laminator by using the Lifejacket® - stops adhesive seeping onto the rollers
- Eliminate repair bills as this product keeps your laminator working at an optimum level
- Available in A4, A3 and A2 sizes to protect documents of all sizes

Ask your supplier for more details.

Using the temperature and speed control

Temperature Control

These buttons are used for increasing or decreasing the temperature setting. The temperature can be increased or decreased by a unit of 1°C when they are pressed. (Please note the temperature control chart below is for a guide only and other factors such as room temperature and thickness of document can affect the laminator).



The desired temperature will be shown on the display, to show the actual temperature of the rollers press the temperature measure button



The temperature range is from 0 -150°C (if the laminator reaches a temperature of more than 160°C, an over heating circuit will cut off the system automatically).

Speed Control

These buttons enable the laminator speed to be controlled manually. The speed ranges from 1-9. The speed will increase/decrease by one unit when the buttons are pressed. The motor will only run once the laminator reaches a temperature of more than 60°C.



Laminating pouch thickness	Paper type	Setting when using a carrier			Setting without a carrier		
		Temp °C	Speed		Temp °C	Speed	
			A2/A3	A4		A2/A3	A4
150 to 200 micron total (75 + 75 per side up to 100 + 100 per side)	Copy paper (80gsm)	135	3-4	6-7	115	3-4	7-9
	Photo paper (120gsm)	135	3-4	5	115	3-4	7-9
	Card (200gsm)	135	3-4	5	115	3-4	7-9
250 to 360 micron total (125 + 125 per side up to 180 + 180 per side)	Copy paper (80gsm)	135	3	5	115	3	4-6
	Photo paper (120gsm)	135	3	5	115	3	4-6
	Card (200gsm)	135	3	4	115	3	4-6
500 micron (maximum) (180 + 180 per side up to 250 + 250 per side)	Copy paper (80gsm)	135	1	2-3	115	2	2-3
	Photo paper (120gsm)	135	1	1-2	115	2	2-3
	Card (200gsm)	135	1	1-2	115	2	2-3

To help preserve the life of the laminator rollers, please take one of the following actions when you have finished using the system.

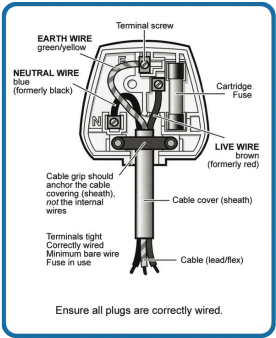
Set the temperature to a reading below 60°C and allow the rollers to continue turning until cool (the top of the laminator should feel cool). When you have finished laminating, continue to let the laminator run at a low temperature and feed through a piece of card, stopping it half way through.

Error warnings

If the LED display reads OPN, ALR or CLS there is a fault with the temperature sensor. Turn off your system and do not use it until you have contacted your supplier for advice.

Technical Specifications

Laminating speed:	300 - 2000mm/minute
Laminating width:	450mm
Maximum pouch thickness:	500 micron
Laminating temperature:	60-160°C
Warm up time:	5 minutes
Power supply:	AC 110, 220V/50Hz, 60Hz
Power consumption:	1550W
Dimensions:	700 x 310 x 150mm
Weight:	18Kg
Warranty:	1 year



Safety!

- Always remember to switch your pouch laminator off after use. Leaving it on for long periods can cause damage to the laminator and is a health and safety hazard
- Always put the sealed end of the pouch or Lifejacket® into the laminator first
- **NEVER** laminate metal objects such as keys or coins
- **NEVER** use the laminator near water and do not leave the laminator next to a hot area such as a radiator
- Always wrap the power cord around safely after use and do not leave it dangling where it could cause an accident
- Do not allow children to use the laminator, unless supervised
- If your laminator stops working, do not try to fix it yourself by disassembling the system. Contact your supplier for advice
- Do not operate the laminator if the power cable is damaged in any way
- Do not use this appliance for anything other than it's intended purpose

FAQs

My document has come out cloudy - what does this mean?

This means that the temperature setting is not quite hot enough. Try increasing the temperature by 5°C and try again as applying more heat should fix the problem.

My document has come out wavy - what does this mean?

If the document comes out with a wavy finish the temperature is set too high. Decrease the temperature by 5°C and try again. If you have an important document to laminate such as a photograph, it is always good to try a test document first to ensure you have the laminator at the perfect temperature.

Warranty & Incorrect Use

Your laminator should reach you in perfect condition, however please retain all original packaging once you have unpacked your laminator in case you need to return it. If your laminator arrives damaged or faulty in anyway, this must be reported to your supplier immediately. If you send your laminator back for repair under warranty at any time, then the warranty may be void if the laminator is not packaged correctly and as a result is damaged in transit. Unauthorised repair or attempts to service the unit will invalidate the warranty. All Peak Pouch Laminators include a 1 year warranty on defective parts under normal operating conditions. **THIS DOES NOT COVER** any jams, misfeeds or wrap arounds caused by operator error and you will be liable for the repair costs (including delivery charges). The warranty does not cover the heated rollers. The warranty is for a period of one year from the date of purchase by the original consumer.

Please note that attempting to laminate any type of unsuitable documents (for example multiple cutouts, textiles, food matter, documents exceeding the maximum thickness or documents too large or small for the pouch) may result in jamming. Damage caused by incorrect use or failing to follow the instructions are not covered within the warranty.

